

**Discussion:**

The purpose of this Product Support Bulletin is to document and discuss the procedure for making a backup of a herd file, the different media a backup can be saved to, and restoring from a backup file. Both Local Backup and Remote Backup will be covered. Local Backup allows you to save a copy of your herd file on your computer or onto external storage, such as a USB Flash Drive. Remote Backup is a subscription service available from Midwest MicroSystems, that allows you to backup your herd file onto our Internet Server. This process ensures that your valuable herd data is stored in a secure off-site location.

Document Number:

**NGG\_003**

Issue Date: 3/10/2016

Product: **Cow Sense<sup>®</sup> NxGen**

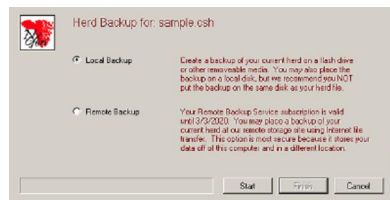
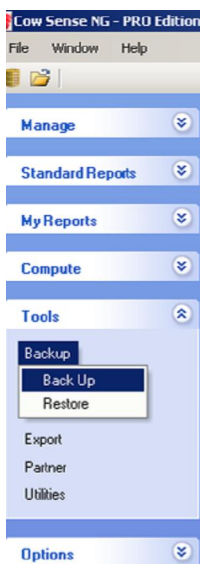
Version: **5 and later**

Page: **1 of 3**

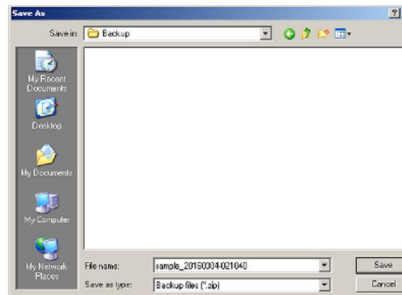
**Saving a herd file as a Local Backup:**

It is recommended to back up your herd file regularly, as well as before you make any major changes. Many of the Wizards offered in Cow Sense NG are powerful tools that allow you to record a lot of data quickly, but undoing these changes can be challenging. The best way to protect yourself against errors is to make a current backup of your herd file first.

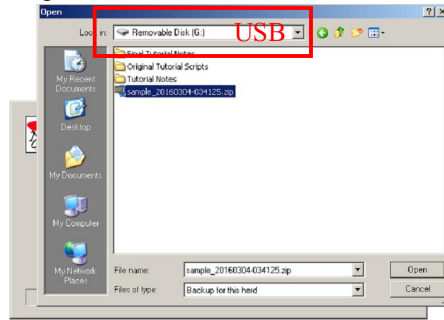
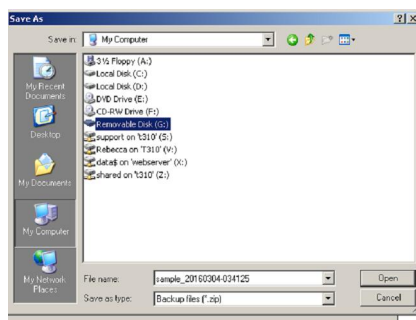
1. To save a Local Backup, go to Tools > Backup > Back Up. On the Herd Backup screen, select Local Backup, and click Start.



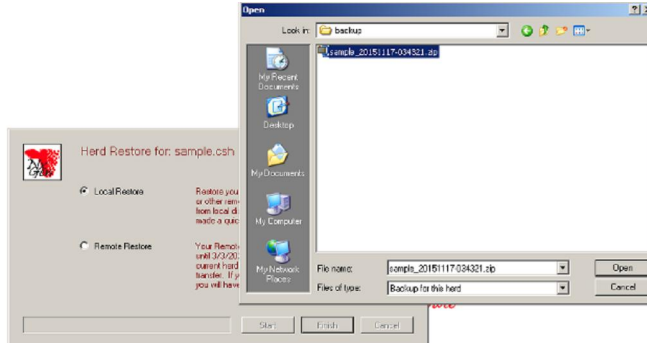
2. Select the location to where you would like to save your herd file. By default, you will automatically be directed to the Cow Sense Backup folder in "My Documents". You may choose to save the file in a different location if desired by navigating with the down arrow to the right of the "Save in:" box. Click Save, and a Back up Complete window will appear. Click OK then click Finish once the backup file has been saved.



3. While My Documents is a great place to save temporary backups, it is highly recommended to save a copy of your herd to removable media, such as a USB Flash Drive to protect your data from computer failure. To save to a USB Drive, click My Computer in the Save As window, and from the drop down arrow to the right of the "Save in" box select the location where you would like your herd file backed up. (USB Drives are generally assigned a drive letter such as E: F: or G: by your computer.) Click Save, and click Finish once the backup file has been saved.



- The process to Restore a backup is similar to Backup. Click Tools > Backup > Restore. Select Local Restore and click Start to automatically be directed to your Cow Sense Backup folder. You may select another location to retrieve a backup if you have saved it to a different location, such as on a USB Drive. If you do not see the file you are looking for, you may change the filter (dropdown arrow in the box just above the “Open and Cancel” buttons) to show “All backup files” rather than “Backup for this herd”.

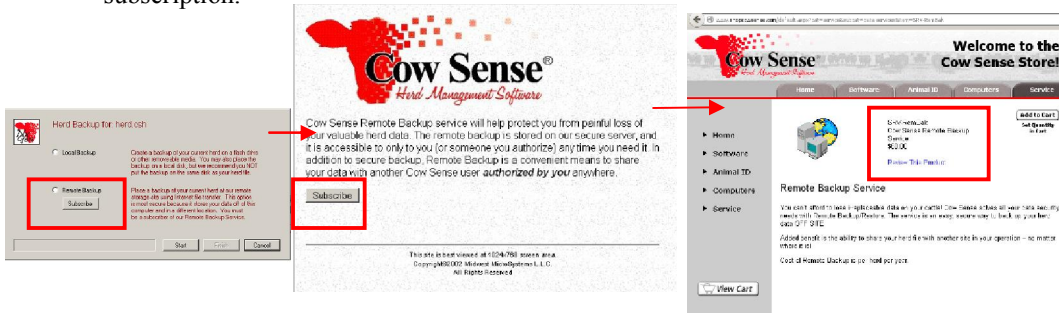


- When finished with the local restore, a success notification will pop up. Click OK to acknowledge and click the Finish button to complete the process.

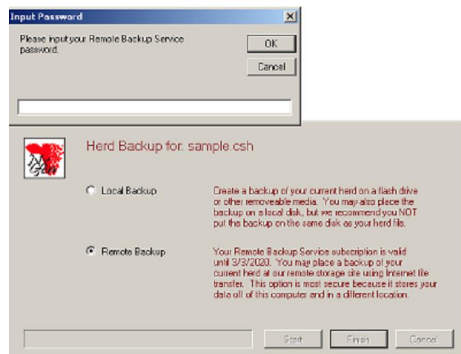
**Saving a herd file to a Remote Backup:**

Off-Site backup is your ultimate protection, and that is why we offer our Cow Sense Remote Backup subscription. Remote Backup/Restore uses your Internet connection to provide fast, convenient, and secure data storage at our secure Internet server. The service is available 24/7, and is as easy as doing a quick backup to your own hard drive. In addition, you get the added benefit of conveniently sharing your herd file with other Cow Sense users that you have authorized.

- You must first be subscribed to the Remote Backup Service. To do this, click the Subscribe button and you will be directed to the Cow Sense store to purchase your subscription.

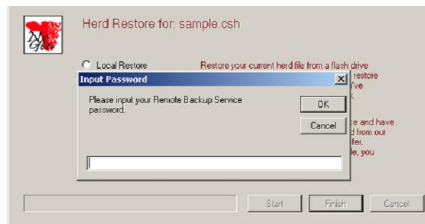


- Once you have purchased your subscription, you will be e-mailed with a password to access this service. To save a herd file to Remote Backup, from the Task Pane on the left select Tools > Backup > Back Up. On the Herd Backup screen, select Remote Backup, and click Start. You will be prompted to enter your Remote Backup Service password.



- When remote backup is complete, a success notification will appear. Click OK to acknowledge.

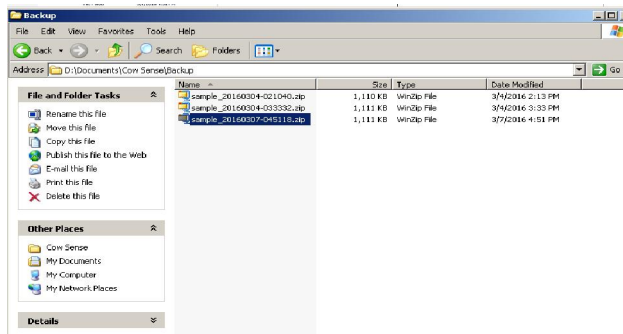
- The process of restore a remote backup is very straight forward. From the Task Pane on the left, select Tools > Backup > Restore to navigate to the Herd Restore Screen. At this point select Remote Restore, and click Start. You will be prompted to enter your password, and then your herd file will begin downloading.



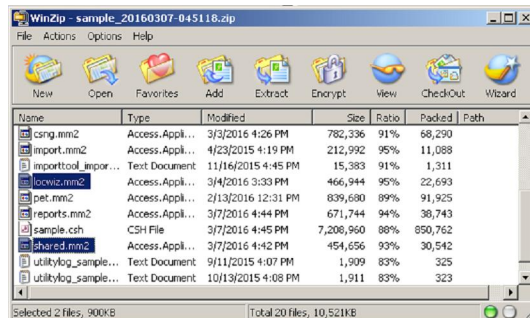
**Additional steps for users of Location Wizard and/or Treatment Wizard:**

Location and Treatment Wizard will automatically be included in the compressed backup zip file when you do a herd backup, but the process to restore them requires an additional step.

- When you back up the herd file, these files are saved inside the Backup Zip File. By default this will be located under My Documents > Cow Sense > Backup, although you may have saved them elsewhere.



- To retrieve the Location and Treatment Wizard files, open My Documents (or wherever you have saved your herd backup to) and open the Cow Sense > Backup folder. Open the backup zip file from which you had restored your herd from.



- Copy the locwiz.mm2 (if you use the Location Wizard) and shared.mm2 (if you use the Treatment Wizard). Paste them into the My Documents > Cow Sense > Common folder to replace the current copies of the files.

