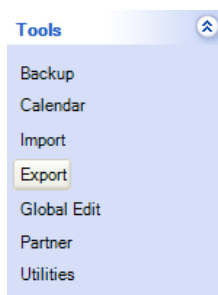


Please contact us at [support@cowsense.com](mailto:support@cowsense.com) or 800-584-0040 for any questions or assistance.

The Export Tool provides a method of assembling data with a one-to-many relationship or merging parent and progeny data and exporting out of Cow Sense into a spreadsheet form. Examples of data with a one-to-many relationship is multiple same type events recorded over time to a single animal record such as events associated with Breeding, Notes, Measures, Samples and Treatments. The Export Tool can also be helpful when wanting to link data that cannot be displayed together in one report, such as Parent to Progeny.

Records are selected to be included for export if their Identity Marker field is toggled on, therefore becoming “Marked Records”. Refer to the Animal List Tutorial for more information on selecting records to Mark. Once you have the records “Marked” that you wish to include as the “Subject Animals” you can proceed to use the Export Tool.



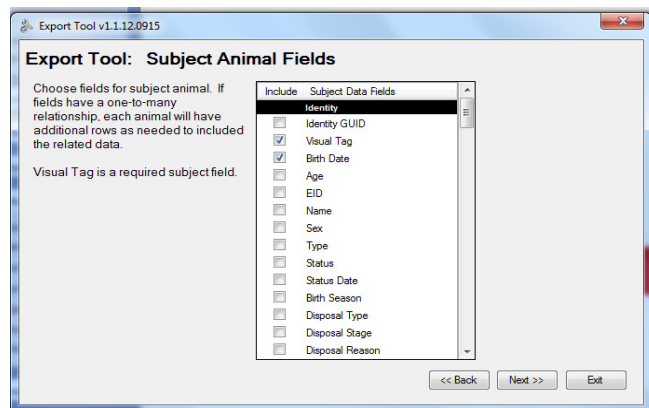
To access these powerful capabilities, open the Export Tool from the Task Pane on the left. Select Tools > Export.

From the Step 1. “Export Tool: Begin Export” Window, two options exist. You may either; **“Make a new report”** or **“Run a saved report”**. Upon first use of the Export Tool select “Make a new export”, as there are no saved exports. Select the “Next” button lower right.



The Step 2, Subject Animal Fields Window will appear. Options presented at this window allow you to select those fields of data relevant to the Subject Animals (Marked Records) for which you wish to export data.

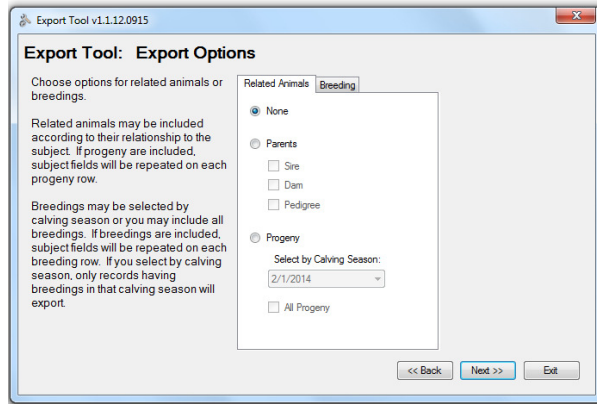
Note, the Visual Tag field is required and may not be unchecked. Select all the desired fields by toggling on (clicking) the Include box. Once you have selected all fields for the Subject Animal Records select the “Next” button lower left.



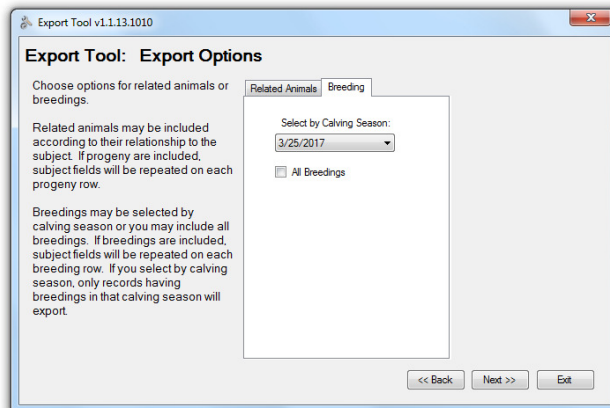
The Step 3, Export Options Window will then appear. There are two tabs on this window, the Related Animals Tab and Breeding Tab.

On the Related Animals tab, three options are displayed.

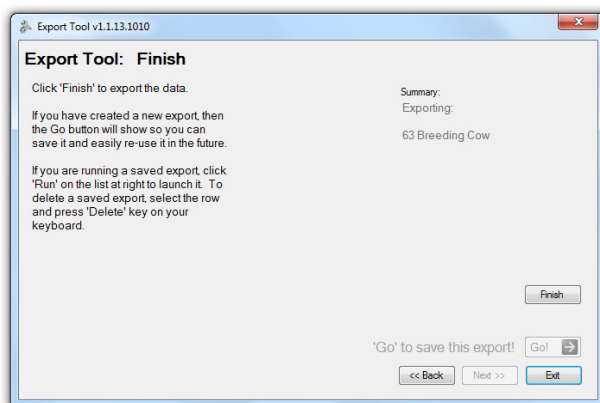
- None (Export only information for the Subject or those records marked)
- Parents (Export parent or pedigree information corresponding to the marked records), or
- Progeny (Export Progeny Data for the marked records. You can either choose to select for a specific Calving Season or by “All Progeny”. If Progeny are included, the Subject Fields previously selected will be repeated on each progeny row.



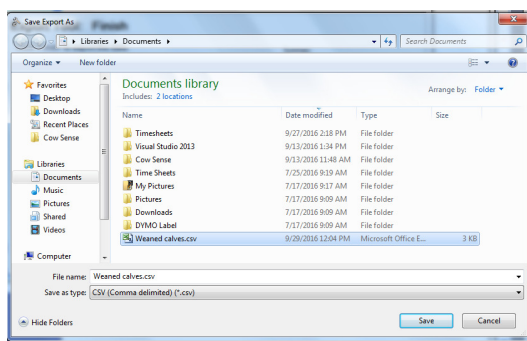
The Breeding Tab allows you to Export Breeding data for those records marked. You may either choose to select for a specific Calving Season or by “All Breedings”. Make your selections and click the Next button.



Step 4., the Finish Window provides a summary or number of the records to be exported as well as their Type classification. Review it, and if it looks correct click Finish. If this is not the data you expected, click the Back button, make your corrections and return to this step.



By default the export will be saved to the Cow Sense Subfolder of your Documents Folder. You will be prompted to name your exported data and choose a location on your computer to which you wish it saved if other than the default.



Click Save, and your data will open and be displayed in your default spreadsheet program, for example Excel.

Visual Tag	Birth Date	Sex	Type	Status	Status Date	Weaning Weight	Weaning Date	Weaning Weight Ratio
AR52	1/30/2013	Bull	Weaned	C Active	1/24/2013	642	9/1/2013	638
AR513	2/1/2013	Heifer	Weaned	C Active	1/24/2013	562	9/1/2013	546
AS614	2/2/2013	Heifer	Weaned	C Active	1/24/2013	560	9/1/2013	546
AT77	1/15/2013	Bull	Weaned	C Active	1/24/2013	594	9/1/2013	538
AT710	2/5/2013	Heifer	Weaned	C Active	1/24/2013	572	9/1/2013	566
AU84	2/5/2013	Bull	Weaned	C Active	1/24/2013	536	9/1/2013	530
O-W30	2/5/2013	Heifer	Weaned	C Active	1/24/2013	546	9/1/2013	540
O-W33	1/28/2013	Bull	Weaned	C Active	1/24/2013	592	9/1/2013	565
RN33	2/4/2013	Steer	Weaned	C Active	1/24/2013	628	9/1/2013	618
RN34	1/18/2013	Heifer	Weaned	C Active	1/24/2013	606	9/1/2013	557
RN36	2/9/2013	Steer	Weaned	C Active	1/24/2013	652	9/1/2013	656
RR52	1/15/2013	Heifer	Weaned	C Active	1/24/2013	570	9/1/2013	517
RR55	2/2/2013	Heifer	Weaned	C Active	1/24/2013	612	9/1/2013	596
RR56A	2/2/2013	Bull	Weaned	C Active	1/24/2013	584	9/1/2013	569
RR56B	2/2/2013	Steer	Weaned	C Active	1/24/2013	526	9/1/2013	512

Upon closing the spreadsheet, you will return to the Export Tool: Finish Window.

If you would like to save the export selections, click the green “Go” button. Give the data selection a name and description. These saved selections will then become an option to run as a “Saved Export” in the future. Click the “Exit” button when finished working in the Export Tool, or the “Back” button to modify your Export for continued use.

